



# Atlas Workholding Air Powered Front Mount B42 Dead Length Collet Chucks

**No Draw-tube or Air Feed Tubes Required: for Lathes, Rotary Tables and Grinders: Series ATL207-B42**

Uses B42 Collets see page 116-117

**Collet Chuck Order No. with Mount:**

**ATL207-B42**

**Straight Recess Mount Type A Mount**

**ATL207-B42A5**

**ATL207-B42A6**

**ATL207-B42A8**

**Type D Mount**

**ATL207-B42D4**

**ATL207-B42D5**

**ATL207-B42D6**

**ATL207-B42D8**

**Other Mounts**

**ATL207-B4244-4°-Taper**

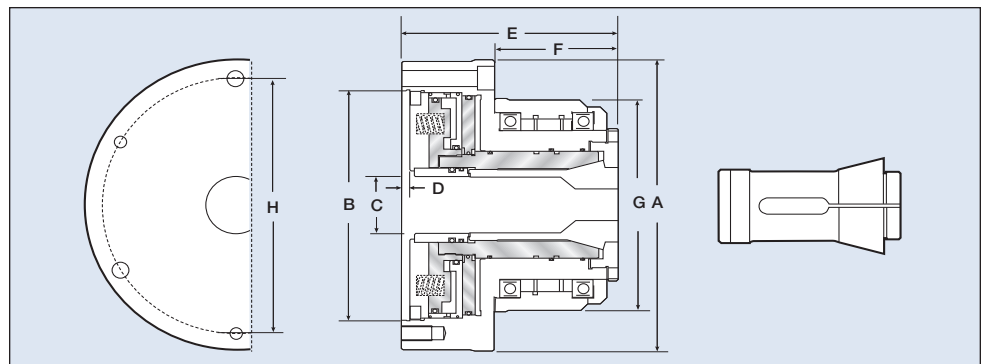
**ATL207-B4245-2<sup>3</sup>/<sub>16</sub>-10**

**ATL207-B4246-2<sup>3</sup>/<sub>8</sub>-6**

**Collet Chuck Supplied with:**

- 2 Filter Bars
- 2 Air Hoses
- 1 Fixing Bracket for Hoses
- 1 Hex Key
- Mounting Bolts
- Users Manual

- ⊕ No Hydraulic System Required
- ⊕ No Draw Tube or Air Feed Tubes Restricting Spindle Bore
- ⊕ No Rear Cylinders and Cylinder Adapters
- ⊕ Low Cost
- ⊕ Easily Convert any Lathe or Grinder into a Production Machine
- ⊕ Ideal for Rotary Table Applications
- ⊕ Change from Collet Chuck to Standard Chuck Quick and Easy
- ⊕ High Speed 4000 RPM
- ⊕ High Accuracy Less Than .001" TIR
- ⊕ Repeats on Duplicate Parts Plus Minus .00015"
- ⊕ Dead Length Design
- ⊕ For Best Accuracy Use High Quality Crawford Collets
- ⊕ Lever or Foot Pedal Actuated
- ⊕ Low Maintenance with Oil Mist Lubrication System
- ⊕ High Resistance to Coolant and Chip Penetration
- ⊕ Uses B42 Collets, Range 1/16" (1mm) to 1-5/8" (42.5mm)
- ⊕ Available in A, D, L, 4 Degree, Threaded and Straight Recess Mounting



Collet Chuck	ATL207-B42
A	196mm (7.72")
B	155mm (6.10")
C	42mm (1.65")
D	5mm (0.20")
E	136mm (5.35")
F	75mm (2.95")
G	150mm (5.92")
H	172mm (6.77")

Specifications	ATL207-B42
Screw Hole Dia	11mm (0.43")x3 - M10xP1.5x3
Collet Type	B42 Collets
Max. RPM	4000
Sleeve Stroke	4mm (0.16")
Air Pressure	3-8 kg/cm <sup>2</sup> (42-114 psi)
Through Hole Dia	42mm (1.65")
Chuck Weight	16kg (35.2lbs)
Grip Force	13,000 lbs @ 100 PSI

**NOTE:** "E" shown is for model ATL207-B42 Collet Chuck with no mounting plate. Add 3/4" to the "E" dimension for mounting plate. This will vary slightly depending on the mounting required. If an exact "E" dimension is required, consult factory.

**OPTIONS:** Order No: **LEV100** Lever Control Package: (Includes: Lever Control, Line Filter, Lubricator and regulator.

Order No: **FOT200** Foot Pedal Control Package: (Includes: Foot Pedal, Line Filter, Lubricator and regulator.