



Atlas Workholding Air Powered Front Mount B80 Dead Length Collet Chucks

No Draw-tube or Air Feed Tubes Required: for Lathes, Rotary Tables and Grinders: Series ATL210-B80

Uses B80 Collets see page 120

Collet Chuck Order No. with Mount:

ATL210-B80

Straight Recess Mount Type A Mount

ATL210-B80A5

ATL210-B80A6

ATL210-B80A8

Type D Mount

ATL210-B80D5

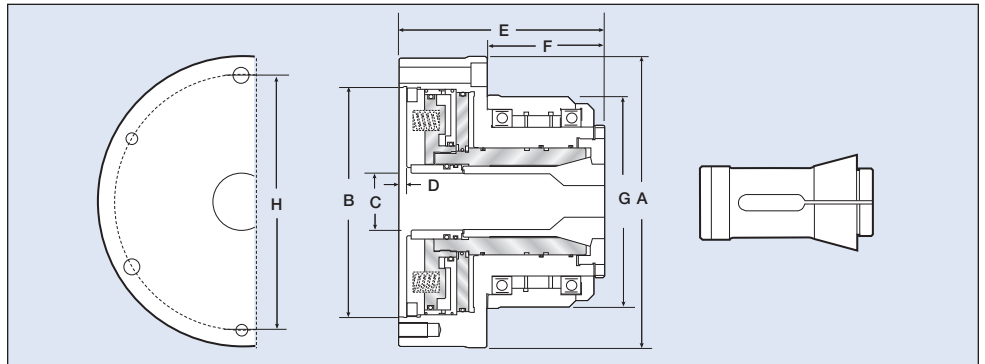
ATL210-B80D6

ATL210-B80D8

Collet Chuck Supplied with:

- 2 Filter Bars
- 2 Air Hoses
- 1 Fixing Bracket for Hoses
- 1 Hex Key
- Mounting Bolts
- Users Manual

- ⊕ No Hydraulic System Required
- ⊕ No Draw Tube or Air Feed Tubes Restricting Spindle Bore
- ⊕ No Rear Cylinders and Cylinder Adapters
- ⊕ Low Cost
- ⊕ Easily Convert any Lathe or Grinder into a Production Machine
- ⊕ Ideal for Rotary Table Applications
- ⊕ Change from Collet Chuck to Standard Chuck Quick and Easy
- ⊕ High Speed 2300 RPM
- ⊕ High Accuracy Less Than .001" TIR
- ⊕ Repeats on Duplicate Parts Plus Minus .0002"
- ⊕ Dead Length Design
- ⊕ For Best Accuracy Use High Quality Crawford Collets
- ⊕ Lever or Foot Pedal Actuated
- ⊕ Low Maintenance with Oil Mist Lubrication System
- ⊕ High Resistance to Coolant and Chip Penetration
- ⊕ Uses B80 Collets, Range 1/16" (1mm) to 3.150" (80mm)
- ⊕ Available in A, D, L, Threaded and Straight Recess Mounting



Collet Chuck	ATL210-B80
A	246mm (9.67")
B	200mm (7.87")
C	80mm (3.15")
D	5mm (0.20")
E	152mm (5.98")
F	80mm (3.15")
G	196mm (7.72")
H	226mm (8.90")

Specifications	ATL210-B80
Screw Hole Dia	11mm (0.43") x 6
Collet Type	B80 Collets
Max. RPM	2300
Sleeve Stroke	4mm (0.16")
Air Pressure	3-8 kg/cm ² (42-114 psi)
Through Hole Dia	80mm (3.15")
Grip Force	19,932 lbs @ 100 PSI
Chuck Weight	32.kg (71.1lbs)

NOTE: "E" shown is for model ATL210-B80 Collet Chuck with no mounting plate. Add 3/4" to the "E" dimension for mounting plate. This will vary slightly depending on the mounting required. If an exact "E" dimension is required, consult factory.

OPTIONS: Order No: **LEV100** Lever Control Package: (Includes: Lever Control, Line Filter, Lubricator and regulator.
Order No: **FOT200** Foot Pedal Control Package: (Includes: Foot Pedal, Line Filter, Lubricator and regulator.